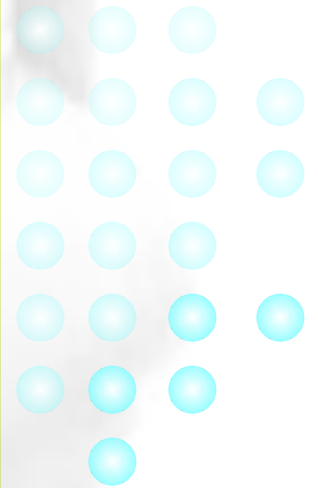


IMAGINE THERE'S NO BIG HOUSE:

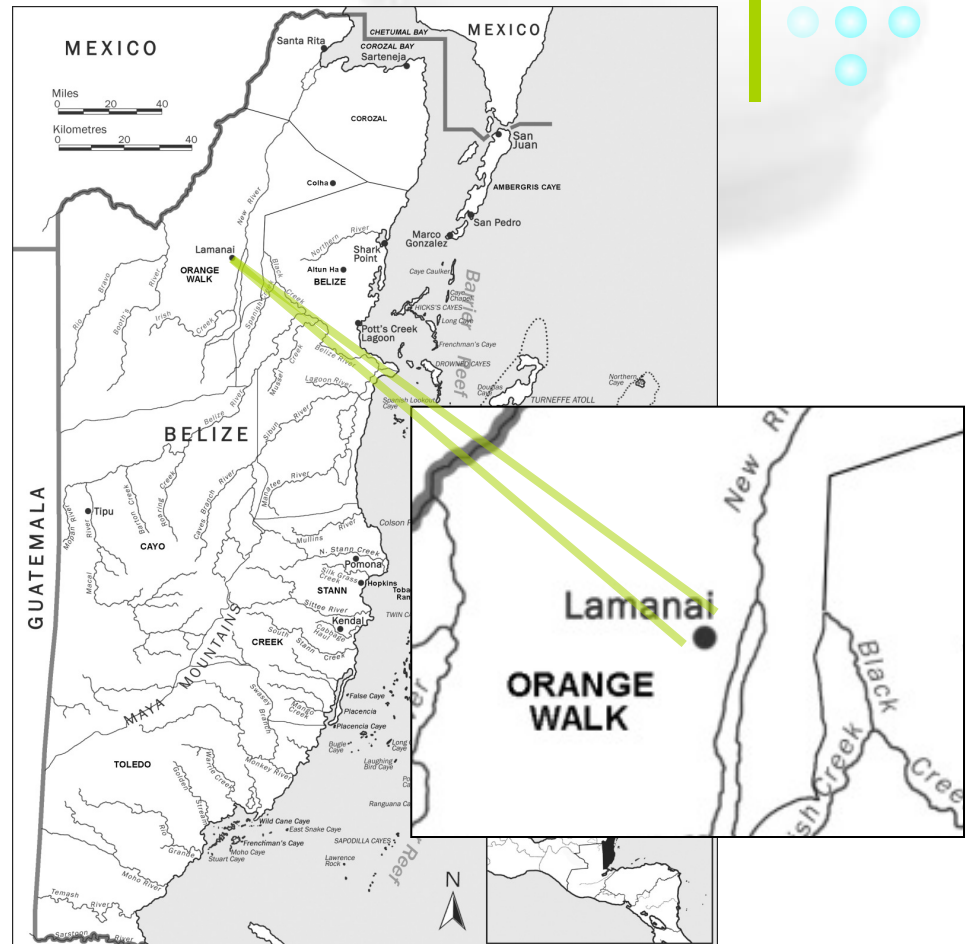
**A DISCUSSION OF THE
IMPLICATIONS OF ARCHITECTURE AND IDENTITY
AT THE
BRITISH PLANTATION SETTLEMENT
AT LAMANAI, BELIZE
1837-1868**

Tracie Mayfield



Introduction

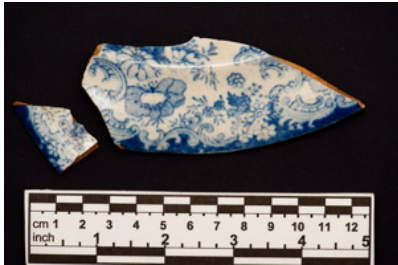
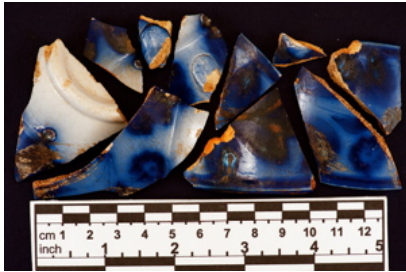
- Lamanai, Belize
- British Settlement, 19th Century
- Indian Church Plantation Grant, 1837
- Abandoned by the 1870' s



Problem Orientation

- colonial landscapes were a well incubated form of labor and social control by the 19th century
- physical landscape at Lamanai already heavily modified before the arrival of European colonists



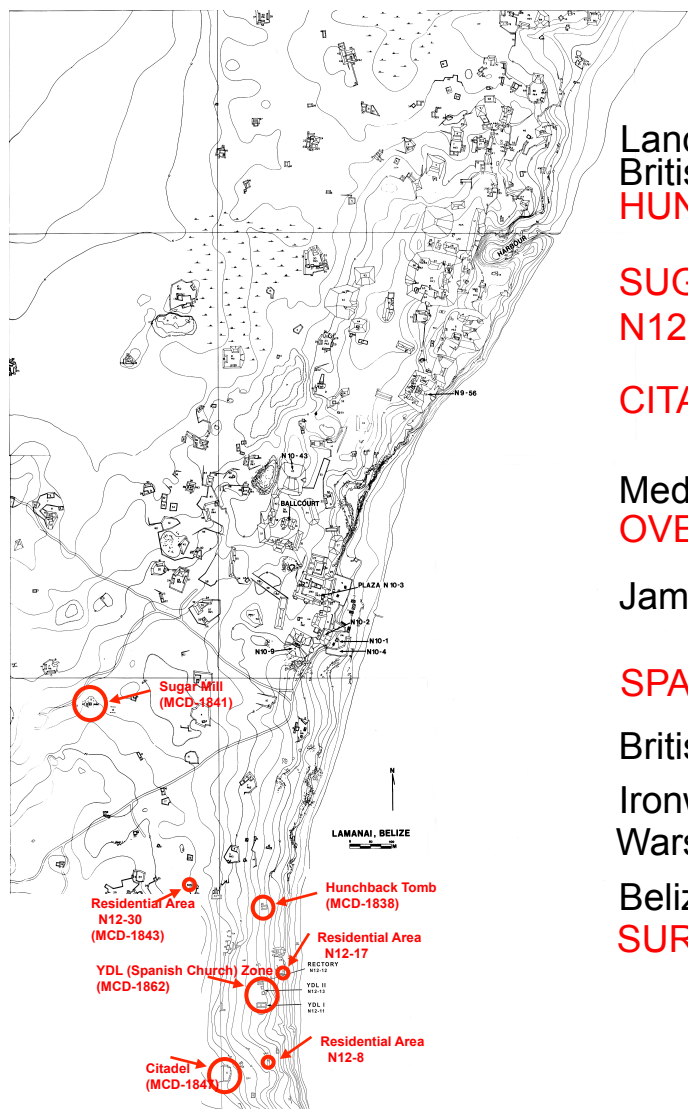


Research Design/Project Overview

- nature of relationships
- distinct features/nominal artifacts
- spatial and material tension



Project Overview



Land Grant(1837)

British coin (1838)

HUNCHBACK TOMB (1838) possible residential/midden

SUGAR MILL (1841) industrial work zone

N12-30 (1843) residential**

CITADEL (1847) possible residence or general store

Median Occupation from documentary sources (1853)

OVERALL SITE from mean ceramic dating (1854)

James Hyde and Company bankrupt (1858)

SPANISH CHURCH ZONE (1862) domestic activity/midden

British Honduras Company acquires land/imports Chinese labor (1864)

Ironwork for Sugar Mill fabricated (1866)

Wars with Ichaiches/British military on site (1867-68)

Belize becomes a Crown Colony (1871)

SURFACE COLLECTION (1873)*

*surface collection was used for mean ceramic dating; this assemblage did not contribute to the overall site timeline other than for general informational purposes as these data could not be placed into archaeological context.

**MCDs for residential features N12-8 and N12-30 were not calculated due to extremely small sample size

Material and Theoretical Implications of Landscape

- symbolic and natural dialogue
- manipulation of abstract space
- constructed landscapes both reflect and shape interactions
- mutable meanings





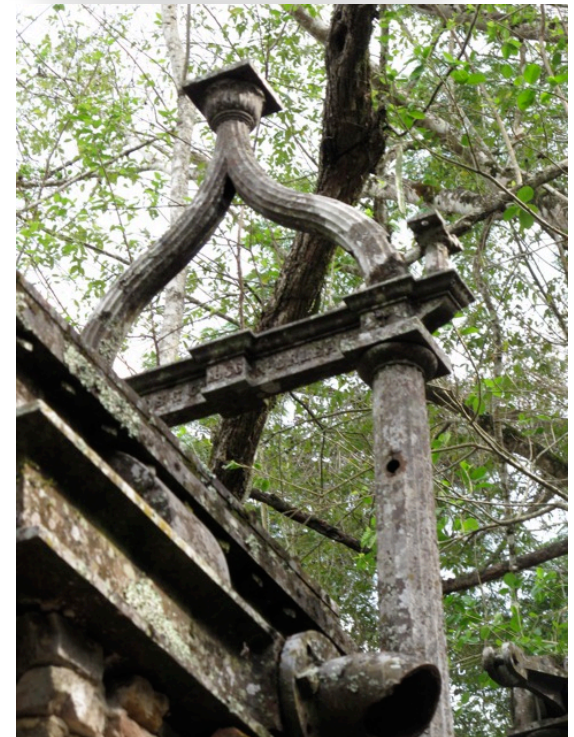
Landscape Analysis

- “ideology of descent” (Sahlins 1965)
- recreation/construction of history
- not “mystified objectivities” (Orser 2006)
- real/manifest realities
- landscape at Lamani beyond manipulation by colonists



Landscape Analysis (cont...)

- British & Spanish colonial approaches markedly different
- no creation of 'new' landscape by British
- in-between spaces/local negotiation
- British another resource on Indigenous land?





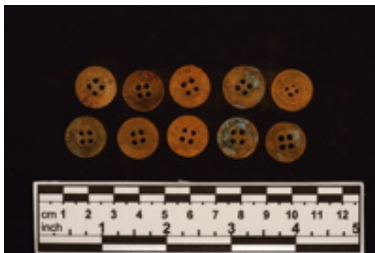
Landscape Analysis (cont...)

- repeated use of space by different groups
- British limited the manipulation of space
- inability to achieve symbolic space



Discussion

- conscious decisions/conscious constructions (Orser 2006)
- Lamanai landscape did not conform to colonial aesthetics



Conclusion

